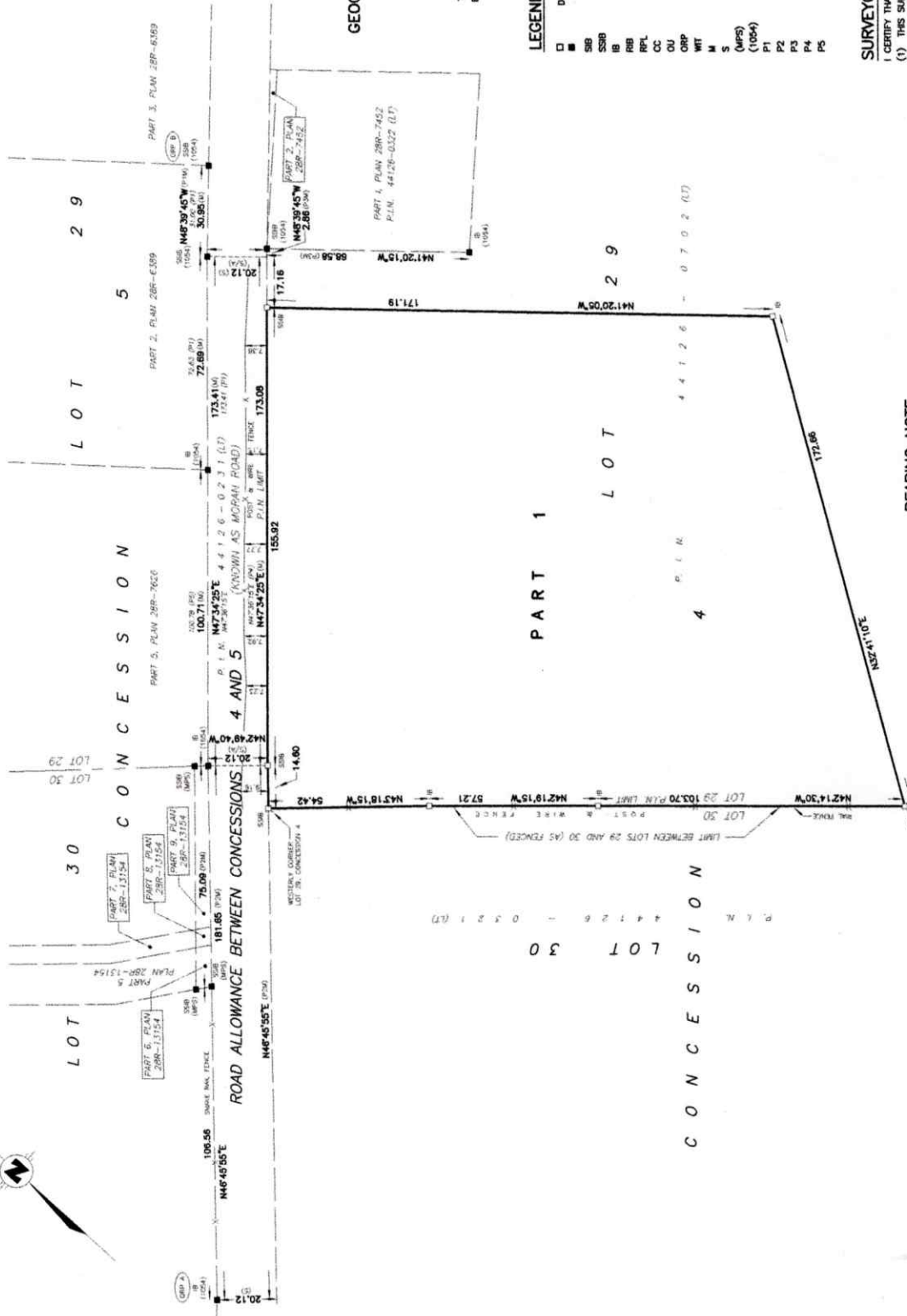


SCHEDULE		P.L.N.	
PART 1	LOT 29	CONCESSION 4	PART OF 44126-0702(LT)
PART 1 COMPRESSES PART OF P.L.N. 44126-0702(LT)			

**PLAN OF SURVEY  
OF PART OF  
LOT 29  
CONCESSION 4**  
IN THE  
GEOGRAPHIC TOWNSHIP OF SOUTH ELMSTLEY  
TOWNSHIP OF RIDEAU LAKES  
COUNTY OF LEEDS

THE INTENDED PLOT SIZE OF THIS PLAN IS 610mm IN WIDTH BY 458mm IN HEIGHT WHEN PLOTTED AT A SCALE OF 1:1000  
GEORGE N. BRACKEN  
ONTARIO LAND SURVEYOR



**LEGEND:**

- DENOTES SURVEY MONUMENT SET
- SURVEY MONUMENT FOUND
- STANDARD IRON BAR
- SHORT STANDARD IRON BAR
- IRON BAR
- ROUND IRON BAR
- ROCK PLUG
- CUT CROSS
- ORIGIN UNKNOWN
- OBSERVED REFERENCE POINT
- WITNESS
- MEASURED
- S SET
- (MPS) MCMOSH PERRY SURVEYING INC.
- (1094) GEO. W. BRACKEN, O.L.S.
- P1 PLAN 288-6389
- P2 PLAN 288-13154
- P3 PLAN 288-7452
- P4 PLAN 288-6887
- P5 PLAN 288-7626

**SURVEYOR'S CERTIFICATE**

I CERTIFY THAT:  
(1) THIS SURVEY AND PLAN ARE CORRECT AND IN ACCORDANCE WITH THE SURVEY ACT AND LAND TITLES ACT, AND THE REGULATIONS MADE UNDER THEM.  
(2) THE SURVEY WAS COMPLETED ON THE 27th DAY OF JUNE, 2023

JULY 11, 2023  
DATE  
**GEORGE N. BRACKEN**  
ONTARIO LAND SURVEYOR  
THIS PLAN OF SURVEY RELATES TO AOLS PLAN SUBMISSION FORM NUMBER Z20886Z.

**BEARING NOTE**

BEARINGS ARE MTM GRID, DERIVED FROM OBSERVED REFERENCE POINTS A & B, BY REAL TIME NETWORK (RTN) OBSERVATIONS, WITH ZONE 9, CENTRAL MERIDIAN 79°30'00"W, NAD83 (GRS) (2010). FOR BEARING COMPARISONS, A ROTATION OF 0°10'15" COUNTER CLOCKWISE, WAS APPLIED TO THE BEARINGS ON P1, P2, P3 AND P4. DISTANCES ARE GROUND AND CAN BE CONVERTED TO GRID BY MULTIPLYING BY THE COMBINED SCALE FACTOR OF 0.999892.

**METRIC**

DISTANCES AND COORDINATES SHOWN ON THIS PLAN ARE IN METRES AND CAN BE CONVERTED TO FEET BY DIVIDING BY 0.3048

**INTEGRATION DATA**

OBSERVED REFERENCE POINTS (ORP'S) DERIVED FROM REAL TIME NETWORK OBSERVATIONS COMPLY WITH RURAL ACCURACY (GRS) (2010) PER SEC.14 (2) OF O. REG. 216/10

POINT ID	NORTHING	EASTING
ORP A	4953447.0	330244.8
ORP B	4953111.4	330758.3

COORDINATES CANNOT IN THEMSELVES BE USED TO RE-ESTABLISH CORNERS OR BOUNDARIES SHOWN ON THIS PLAN

**Callon Dietz** INCORPORATED  
ONTARIO LAND SURVEYORS  
CARLETON PLACE LONDON NORTH BAY  
request@callondietz.com callondietz.com

SURVEY BY: RB DRAWN BY: NJ FILE NO: 23-2031 PLAN NO: 3-3448